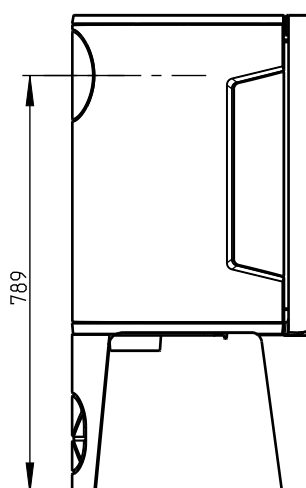
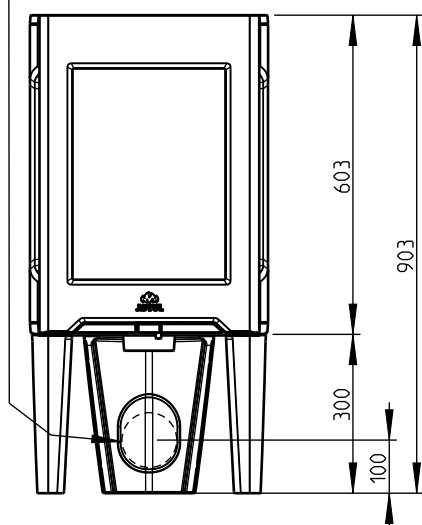
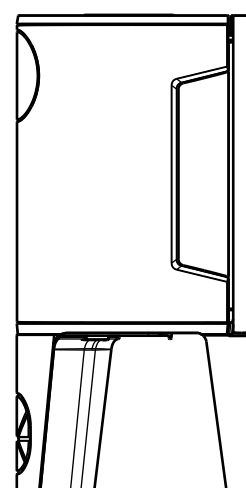


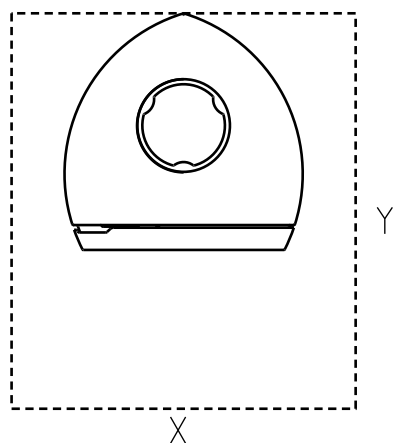
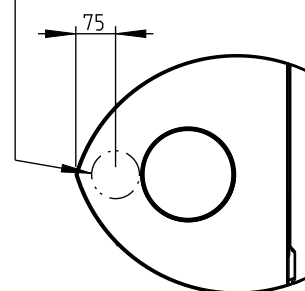
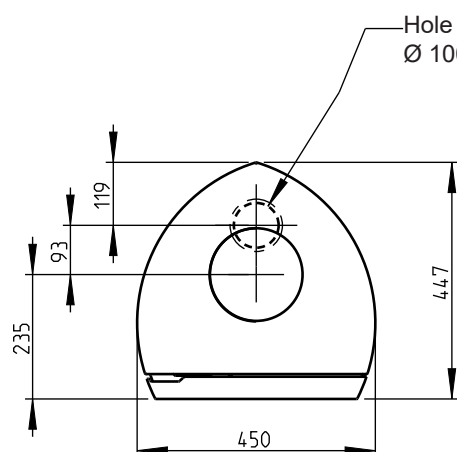
Hole in wall for outside air
Ø 100 mm connection



External air cover:
Hole in floor for outside air
Ø 100 mm connection



Hole in floor for outside air
Ø 100 mm connection



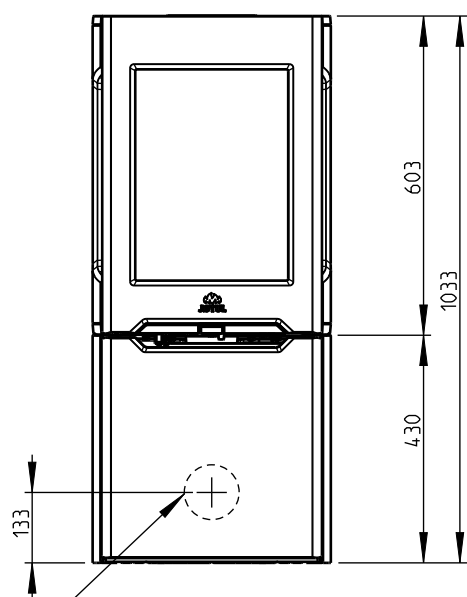
Min. floor plate dimensions X,Y =
In accordance with national laws and regulations
See chapter 4.1

Fig 1a

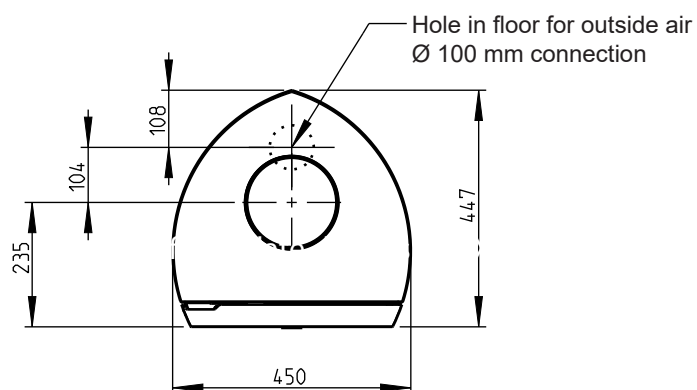
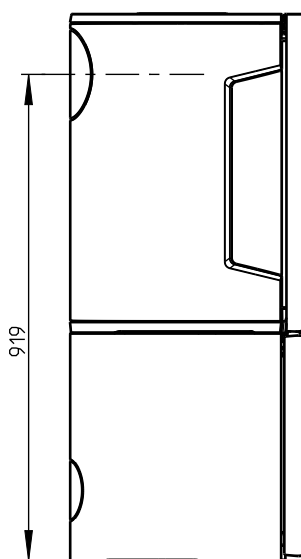
Jøtul F 165

EN 16510

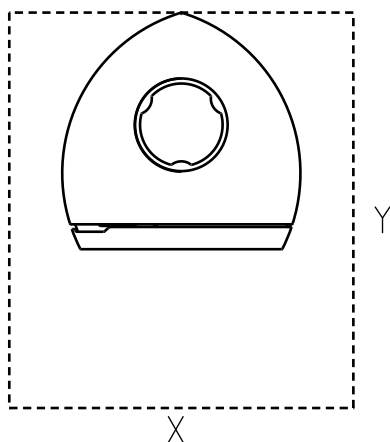
Warning: Do not place combustible material in the base of the stove (F 165 and F 165 S).



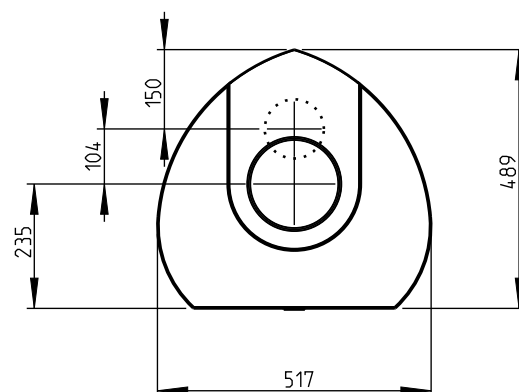
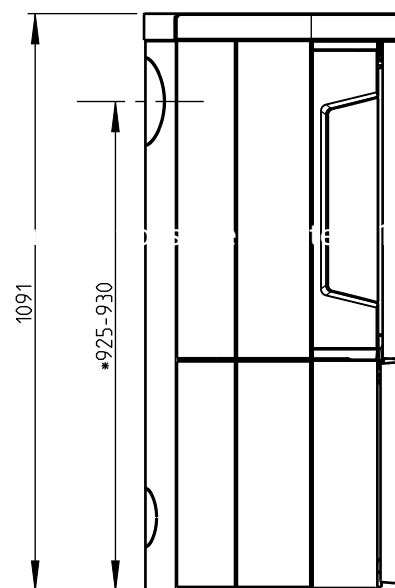
Hole in wall for outside air
Ø 100 mm connection



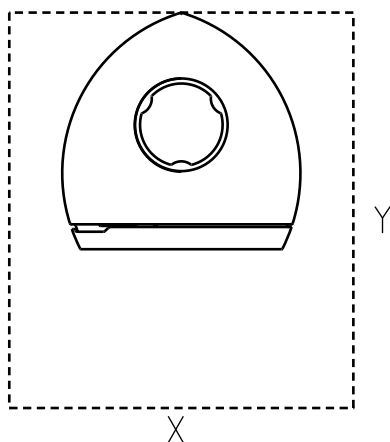
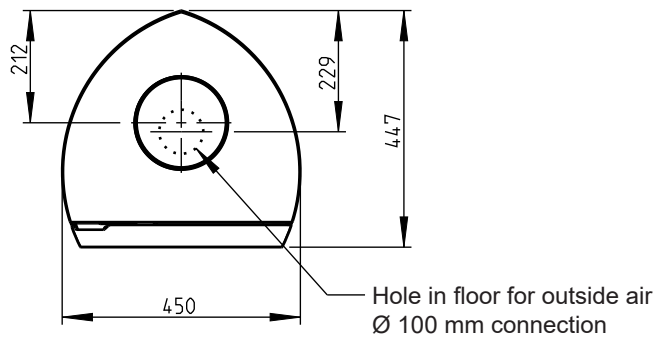
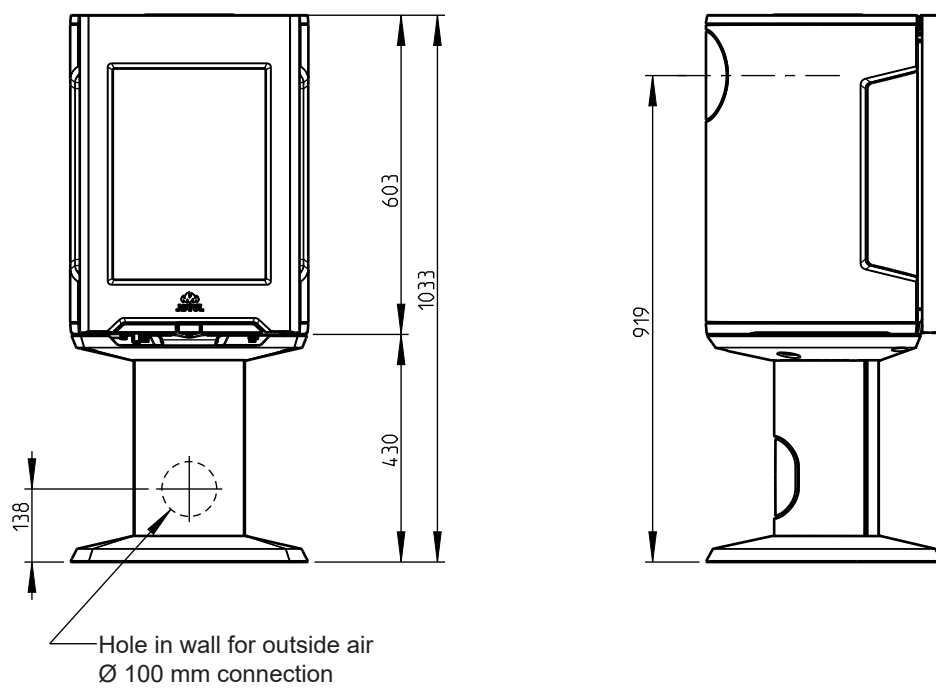
Hole in floor for outside air
Ø 100 mm connection



Jøtul F 165 S




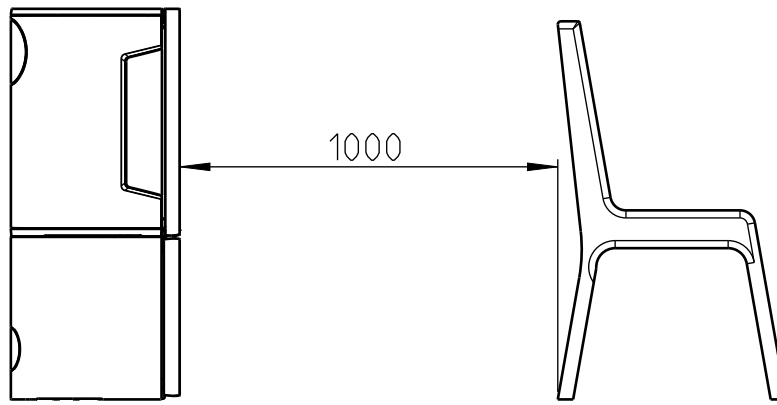
Min. floor plate dimensions X,Y =
In accordance with national laws and regulations
See chapter 4.1



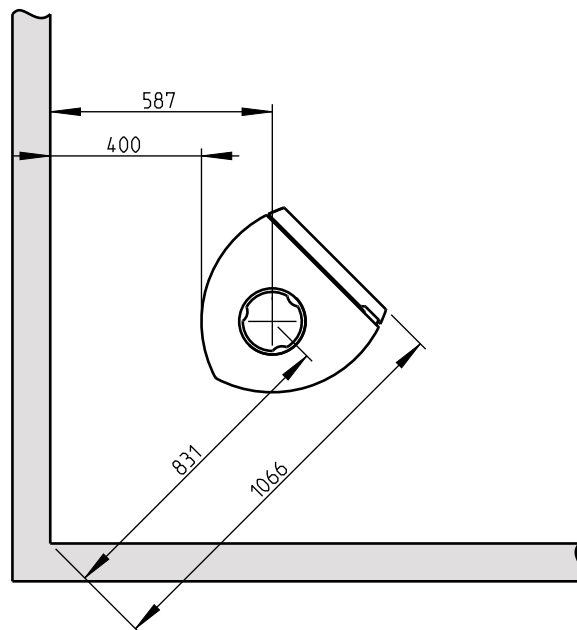
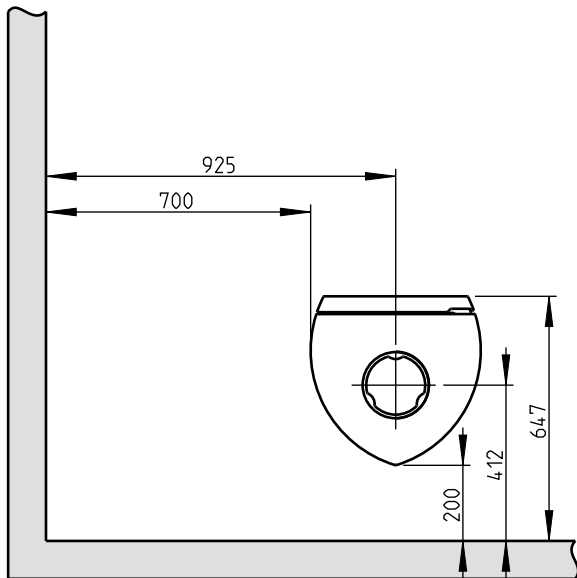
Min. floor plate dimensions X,Y =
In accordance with national laws and regulations
See chapter 4.1

Fig 1b

Combustible wall 



Min. distance to combustible wall



Jøtul F 165 S

Min. distance to combustible wall.
Soapstone base model

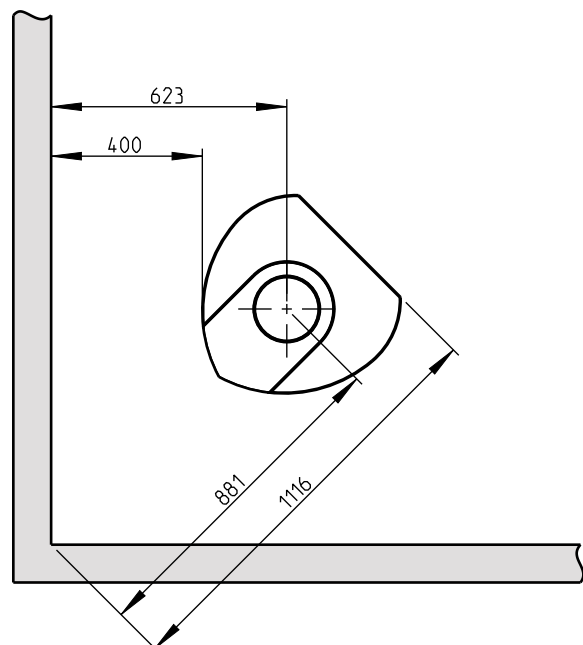
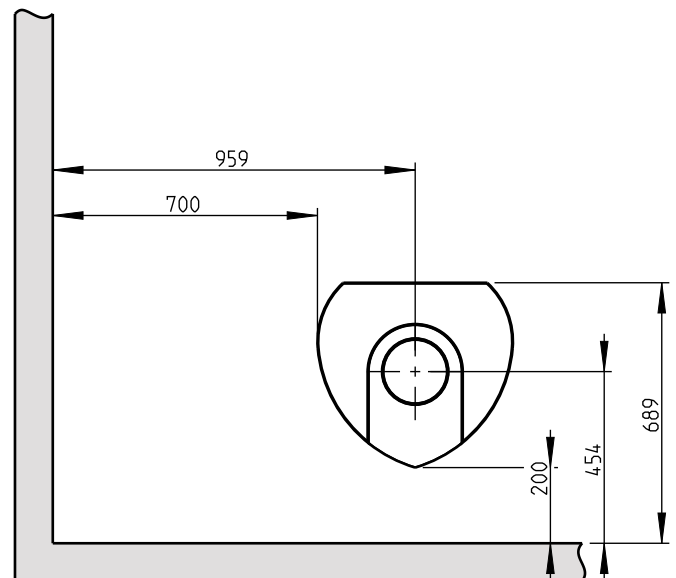


Fig 1c

Jøtul F 162 / F 163 / F 165 / F 165 S / F 167

EN 16510

Min. distance to firewall

Combustible wall

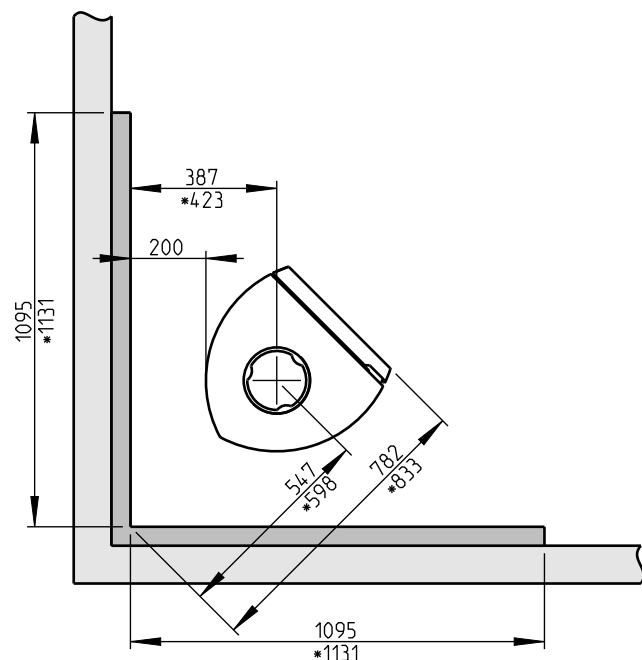
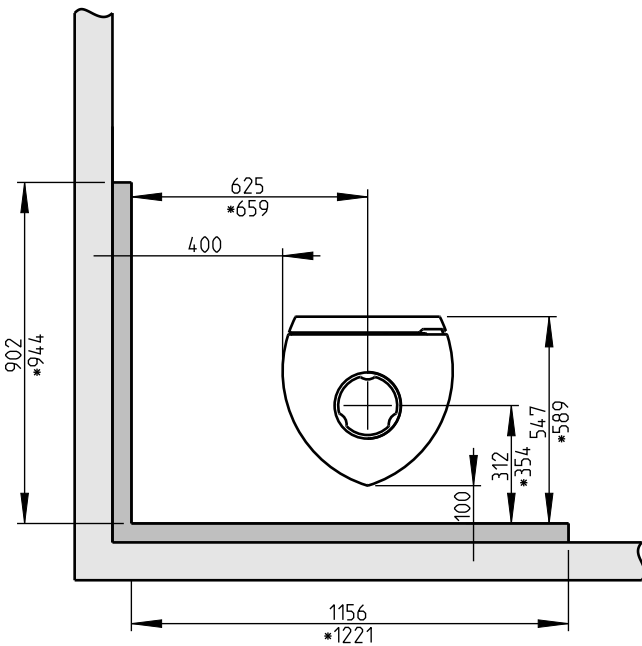
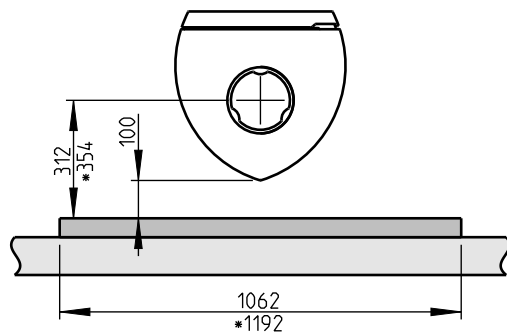


Firewall



* Jøtul F 165 S (Soapstone)

External



Integrated

