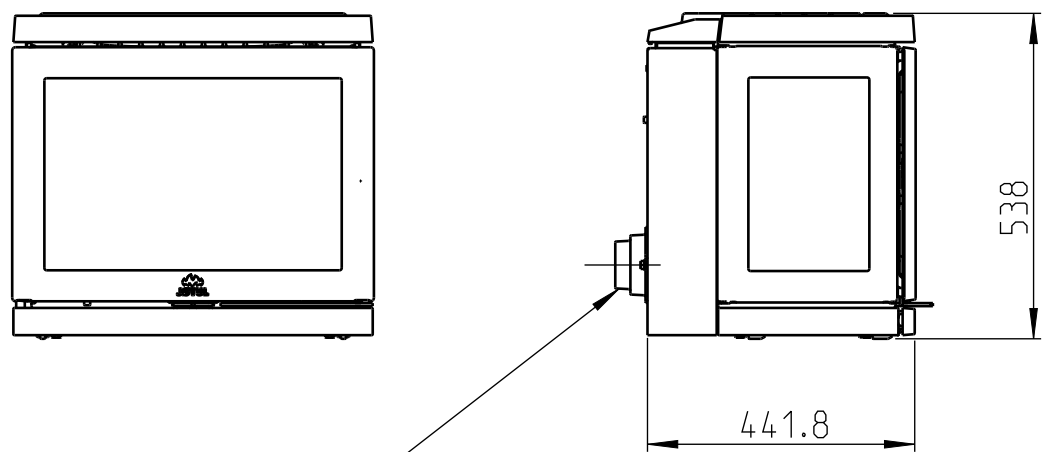
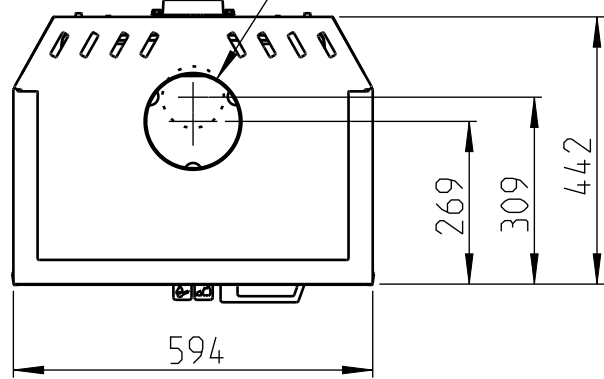


Jøtul F 520 LB

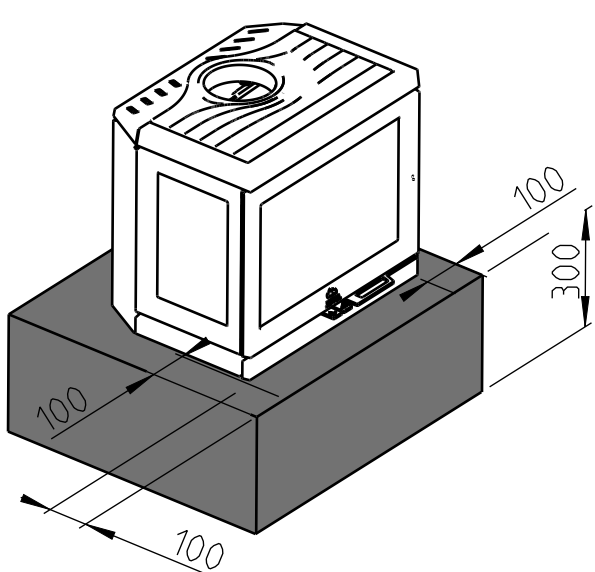


Hole in wall for outside air connection Ø80 / Ø100

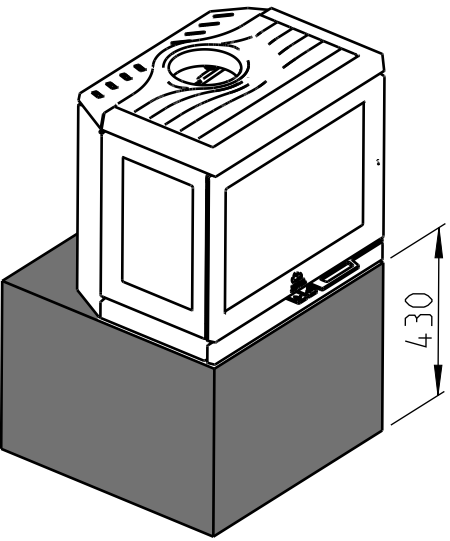
Hole in floor/base for outside air connection Ø80 / Ø100



Min. dimensions of NON-combustible base

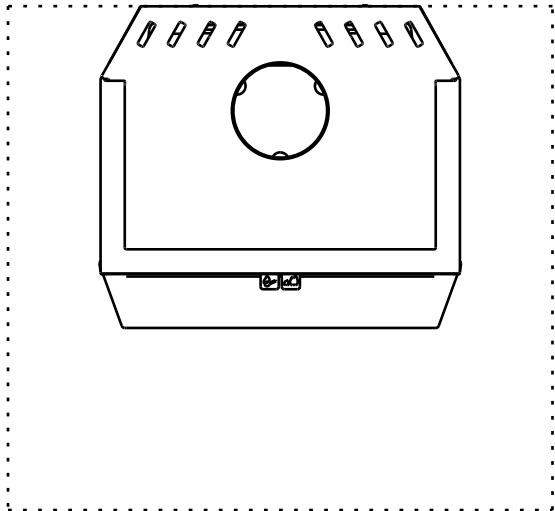


Min. dimensions with extended side / front



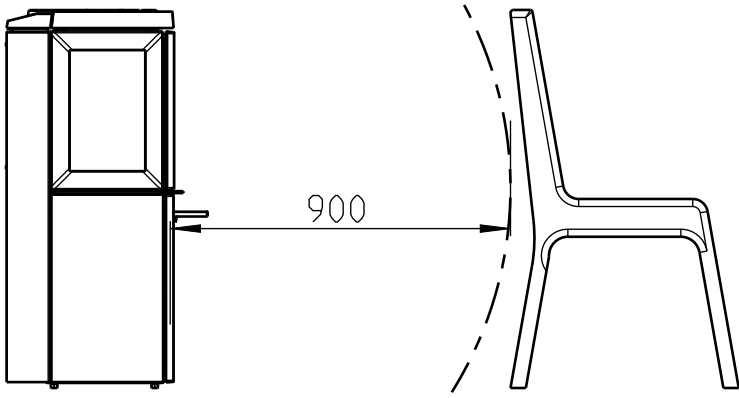
Min. dimensions of base

Minimum clearance from furniture/combustible materials




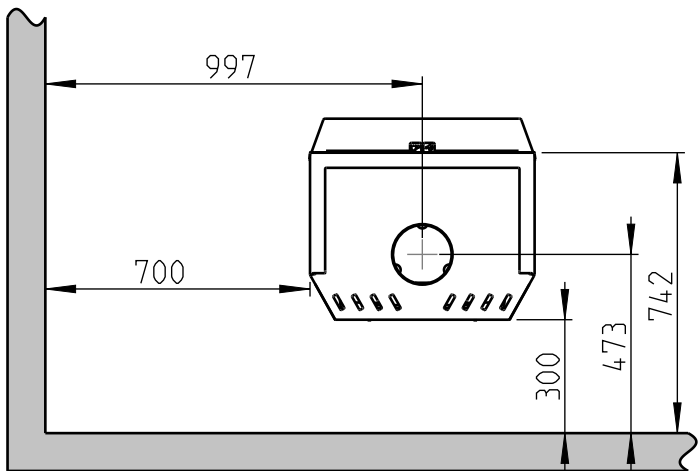
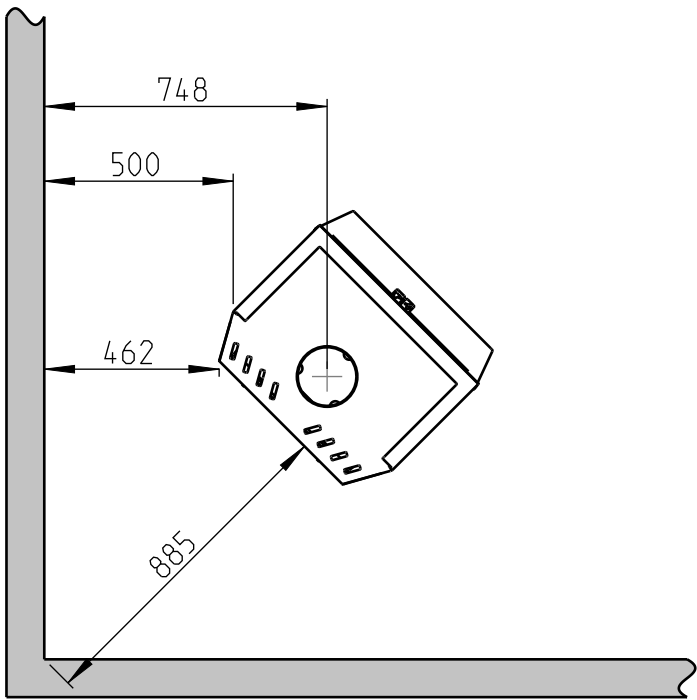
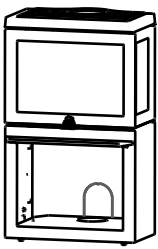
Min. dimensions for floor plate

X/Y = in compliance with national laws and regulations

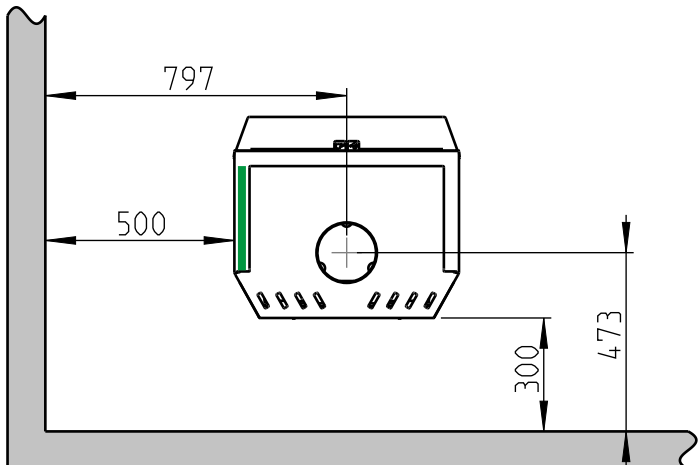
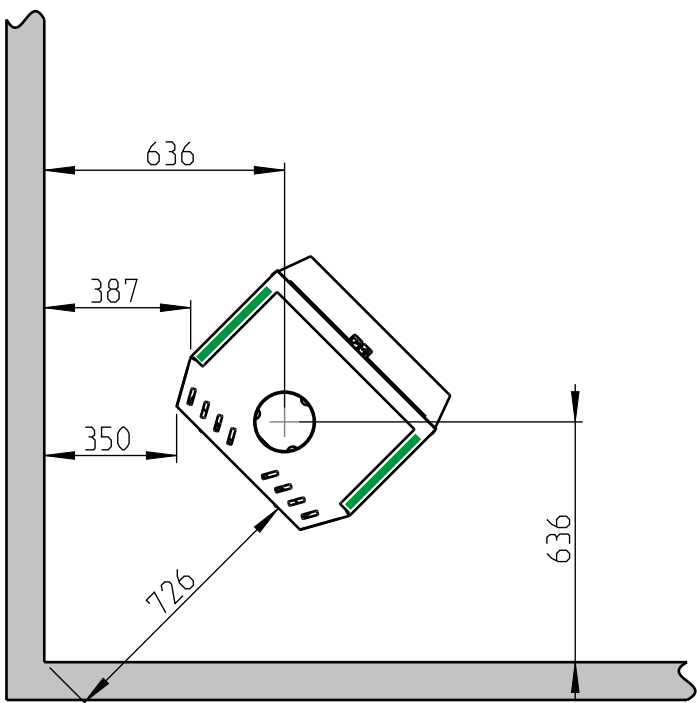
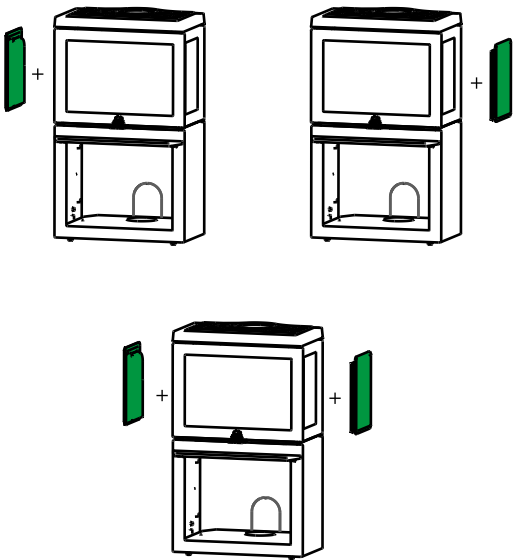


F 520 / F 520 LB / F 520 HT :
Minimum distance to combustible wall

With semi-insulated chimney/shielded flue pipe all the way down to the product  Combustible wall



F 520 / F 520 LB / F 520 HT
With retrofitted cast iron side



F 520 / F 520 LB / F 520 HT
- With retrofitted cast iron side and convection kit side
- With retrofitted convection kit rear

